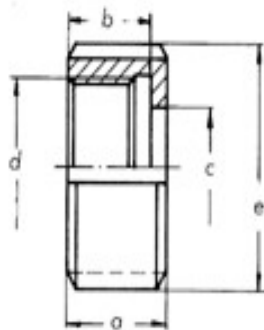


3. NAKRĘTKA ZAŚLEPKA DO ZŁĄCZA SKRĘCANEGO

Norma DIN



Charakterystyka:

DN	a	b	c	d	e	kg
10	18	15	19	28x1/8"	38	0,069
15	18	15	25	34x1/8"	44	0,082
20	21	18	31	44x1/6"	54	0,136
25	21	18	36	52x1/6"	63	0,185
32	21	18	42	58x1/6"	70	0,215
40	21	18	49	65x1/6"	78	0,258
50	22	19	62	78x1/6"	92	0,345
65	25	21	80	95x1/6"	112	0,550
80	30	26	94	110x1/4"	127	0,790
100	31	26	115	130x1/4"	148	1,060
125	35	30	138	160x1/4"	178	1,430
150	40	34	164	190x1/4"	210	2,300