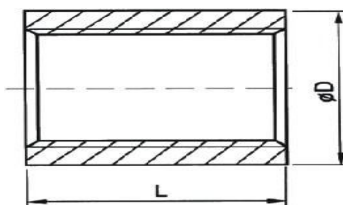


## 2. MUFA

Gwint wewnętrzny, DIN 2986,  
wykonana ze stali 316.



Charakterystyka:

WYMIAR	D (mm)	L(mm)
1/8"	14.0	20.0
1/4"	18.5	25.0
3/8"	21.3	26.0
1/2"	26.4	34.0
3/4"	31.8	36.0
1"	39.5	43.0
1 1/4"	48.3	48.0
1 1/2"	54.5	48.0
2"	66.3	56.0
2 1/2"	82.0	65.0
3"	95.0	71.0
4"	122.0	83.0