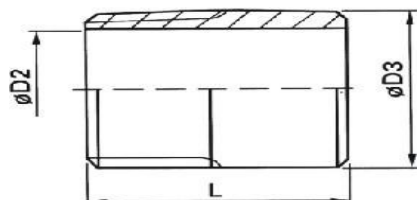


1. NYPEL JEDNOSTRONNY DO WSPAWANIA

Gwint zewnętrzny DIN 2982,
wykonany ze stali 316 lub 304



Charakterystyka:

WYMIAR	D2 (mm)	D3 (mm)	L (mm)
1/8"	6.0	10.2	30.0
1/4"	9.0	13.5	30.0
3/8"	12.0	17.2	30.0
1/2"	16.0	21.3	35.0
3/4"	21.0	26.9	40.0
1"	27.0	33.7	40.0
1 1/4"	35.0	42.4	50.0
1 1/2"	41.0	48.3	50.0
2"	53.0	60.3	50.0
2 1/2"	66.0	76.1	60.0
3"	79.0	88.9	70.0
4"	103.0	114.3	80.0